

# BEECHCRAFT ACCESSORIES – CONTROL WHEELS

## BEECHCRAFT ACCESSORIES

Designed & built by real-world pilots, manufactured to the highest standards. These products are built for those incomparable Beechcraft. Years of experience and the highest quality materials and construction result in the best products available for Bonanzas & Barons. All have FAA STC/PMA as applicable.

### BONANZA/BARON CONTROL YOKE LOCK



Protect your investment with this heat treated lock. It installs quickly and simply ( no modification is needed) but cannot be removed without being unlocked. It is a permanent, direct replacement for the original equipment. Complete with the highest quality lock, instructions, and all hardware. P/N 05-00649 .....

Optional clipboard for clearances or notes makes a stable flight center. Spring-loaded, it snaps out of the way in seconds.

Standard.....P/N 05-00650  
Deluxe (with Quick Release).....P/N 05-01335 .....

### BEECH THROTTLE, MIXTURE, PROP KNOB SET



These high-strength knobs for Bonanzas are a big improvement over old, cracked original equipment and likely the best replacement knobs on the market. Bright color-coded space-age material will not crack or fade and will not get hot like aluminum knobs. P/N 05-00652 .....

Push buttons only, with new screws P/N 05-00653 .....

### WINDOW VENT HINGE & LATCH KIT

For new windows only on Mooney, Piper, Socata, Commander.

P/N 05-01336 .....

### BEECH STORM WINDOW HINGE/LATCH KIT



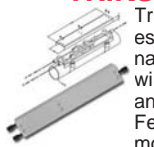
Every Bonanza or Baron pilot will appreciate the quality workmanship in every one of these storm window hinge/latch kits. Professional construction means they work smoothly, and they fit standard factory window holes with no modifications.

Complete hinge/latch kit.....P/N 05-00654 .....

Latch & Stiker only.....P/N 05-00655 .....

Hinges Only.....P/N 05-00656 .....

### TRIKSLIDE DUAL THROTTLE MIXER



Trikslide is a dual throttle input-mixer/slider designed especially for trikes and ultralight aircraft. Trikslide eliminates the interaction between two throttle cables. It will mount on any round or square structural member and provides smooth slide action with a full 2" stroke. Features aluminum and delrin construction with universal mounting clamps and a universal control cable connector

which will fit all cable terminations. P/N 05-00782 .....

### HOMEBUILDERS CONTROL WHEELS



New lightweight, low cost wheel designed with the homebuilder in mind. Approximately same dimensions as above ACS control wheel but weighs only 15 oz. made of cast magnesium. Coated with light gray epoxy paint which can be used as finished or repainted if preferred. Drill blank mounting post as required.....P/N 246-9 .....

### CONTROL YOKE UPGRADES



Now flaking & peeling finish on worn control yokes can be remedied cost effectively by these pilot-installable, semi-flexible, molded grips which are available with push-to-talk button built-into the top of the yoke (not the side). The Model SX-100 grips (pilot & copilot set) and optional, built-in, Model SX-101 plug-in push-to-talk button simply slip-over the thin, "ram's horn" control yokes of Cessna 150, 152, 172, 177, Grumman-American AA-1, AA-5 and early Mooney aircraft. Their thick, padded feel and built-in push-to-talk button add comfort, convenience & value to vintage airplanes. The top-mounted, low profile, miniature push-to-talk button supplied completely wired with plug, jack and coiled cord, is less likely to be pressed by accident, get in the way or slip out of position than bulky, side-strapped, units. Complete your updated yoke configuration with a pair of new model SX-110 center cushions, richly finished in black. Cushions fit neatly over centers of any control yokes.

.....ea

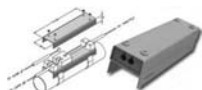
Model No.	Description (set of 4)	Part No.	Price
SX-100	Molded Grips w/o built-in PTT switch	05-16600	.
SX-101	Molded Grips w/1 built-in PTT switch(LH)	05-16630	.
SX-101	Molded Grips w/2 PTT switch (L&R)	05-16635	.
SX-110	Center Cushions (set of 2)	05-16610	.

### BEECHCRAFT MAIN GEAR BOLT



This is a replacement for discontinued Main Gear Bolt part number CA101-810089-1. The new part number is

CA101-810089-1A. This part has been tested and is superior in tensile strength and fatigue and crack resistance. Eligible for Beechcraft 1900 series aircraft, this is a life limited part that meets all requirements for the full 5 year/10,000 cycle life. The part number and serial number are engraved on the bolt head. P/N 05-04163 .....



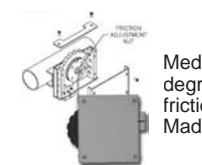
### DUAL CARBURETOR SPLITTER

Splits a single throttle input into two outputs for dual carburetor installations. Clamp mounting. P/N 05-01823 .....



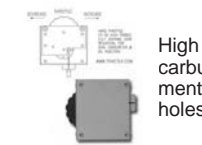
### DUAL CARBURETOR SPLITTER WITH OIL INJECTION

Splits a single throttle input into three outputs for dual carburetor installations with oil injection. Clamp mounting. P/N 05-01824 .....



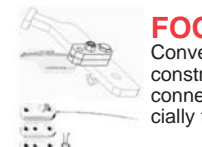
### HAND THROTTLE

Medium torque rotation for single carburetors only. 270 degree rotation for fine throttle adjustment. Adjustable friction drag. Clamp mounting - no holes required. Made from weatherproof materials. P/N 05-01825 .....



### HAND THROTTLE

High torque, 2.5:1 internal gear reduction. For dual carburetors. 825 degree rotation for fine throttle adjustment. Adjustable friction drag. Clamp mounting - no holes required. Made from weatherproof materials. P/N 05-01826 .....



### FOOTPEDAL CABLE CONNECTOR

Convenient foot pedal throttle control. Aluminum/delrin construction with mounting hardware. Universal cable connector-fits all cable terminations. Designed especially for trikes and ultralight aircraft. P/N 05-01827 .....



### ACS CONTROL WHEEL A-1310

Designed to be more user friendly than standard control wheels. Mounting position can be raised or lowered one inch by rotating the mounting flange. All parts machined from 6061-T6 billet. The A-1310 Control has cavities for wiring, but does not come prewired or with a mic switch. They can be ordered with a hole drilled for the mic or can be drilled later. Wt: 26 oz. Mounting flange hole sizes: 3/4" or 7/8". Special smaller hole sizes: Add 10.00

3/4" Black Anodized.....P/N 05-02248 .....

3/4" Bare Aluminum.....P/N 05-02279 .....

7/8" Black Anodized.....P/N 05-02282 .....

7/8" Bare Aluminum.....P/N 05-02284 .....

### BEECH BONANZA/BARON CONTROL WHEELS

These control wheels are identical in design to the new Beechcraft large ram's horn style wheels. They are powder coated with a highly durable material in the same color as current Raytheon control wheels. Peeling or yellowing that occurs on older Beech wheels has been eliminated by the powder coating process. This control wheel is a direct replacement for the Beech/Raytheon 60-524080-13, 14 (for F33A,

F33C, V35B, A36, and B36TC) and , -17 (for F33A,

F33C, A36, B36TC, and 58) control wheels. Can be installed on many

other aircraft using FAA form 337 for field approval. FAA Form 8130-3.

Hand crafted black leather wrapping is available for these control wheels.

Each wheel is individually hand laced and custom fitted to the wheel. We

can also hand wrap your existing Beech control wheel in leather. Send

your control wheel to Aircraft Spruce in Corona, CA and allow 3 weeks

for delivery. An installation kit is required for each control wheel, which

includes two thumb plates, a blank face plate, and mounting hardware.

A Davtron MB800 digital chronometer installed in the faceplate of the

control wheel is also available.



The Basic Control Wheel (P/N 05-00545) now includes a white installation kit. If the black powder-coating option for this installation kit is desired it is an additional \$50.00

Description	Part No.	Price
Basic Control Wheel & White Install Kit	05-00545	.
Leather wrapped control wheel install kit	05-00548	.
Chronometer with custom faceplate	05-00549	.

AP