

LUSCOMBE PARTS

(FAA/PMA APPROVED)

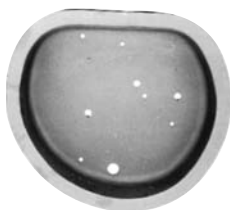
ALL ALUMINUM COWLING



- Nose Cowl P/N 05-07990.....
- Bottom Cowl P/N 05-07995.....
- Top Cowl P/N 05-08000.....
- L/H Cowl P/N 05-08005.....
- R/H Cowl P/N 05-08010.....

Note: Cowling is trimmed oversize requiring a finish trim for each individual airplane.

AP



FIREWALL DISHPAN

Used on Luscombe with an electrical system.

P/N 05-08015.....



FIREWALL TO ENGINE MOUNT RUBBER BUSHING

6 ea. required per aircraft.

P/N 05-08020.....



LUSCOMBE ENGINE MOUNT

For all Continental powered Luscombe, A-65 thru C-90

P/N 05-08025.....



MANUALS

- 8A Owner's Manual P/N 13-00230.....
- 8E Owner's Manual P/N 13-00235.....
- 8 Series Master Parts List, illustrated P/N 13-00240.....
- Service Manual, early fabric wings P/N 13-00245.....

BLANK INSTRUMENT PANEL



P/N 05-08030.....

CONTROL CABLES (GALVANIZED)



- Brake Cable Assembly P/N 05-08035.....
- Elevator Cable, SN 1-4199 P/N 05-08040.....
- Elevator Cable, SN 4200 and up P/N 05-08045.....
- Left Hand Rudder Cable P/N 05-08050.....
- Right Hand Rudder Cable P/N 05-08055.....
- Stick to Aileron Cable P/N 05-08065.....
- Left Hand or Right Hand Aileron Balance Cable, 16 ft., 7/8 in. P/N 05-08070.....
- Left Hand or Right Hand Aileron Balance Cable, 15 ft., 10-3/4 in. P/N 05-08075.....
- Forward Trim Cable P/N 05-08080.....
- Aft Trim Cable Assembly (2 req'd) P/N 05-08085.....

8A EXHAUST COMPONENTS FITS ALL A-65 CONTINENTAL ENGINES



- Rear Crossover P/N 05-08090.....
- Left Hand Stack P/N 05-08095.....
- Right Hand Stack P/N 05-08100.....
- Exhaust Clamp P/N 05-08105.....
- Complete Assembly (includes 2 exhaust clamps) P/N 05-08110.....

LUSCOMBE 8A CARBURETOR & CABIN HEAT SHROUD



Fits on U8627-5 Stack..... P/N 05-08115.....