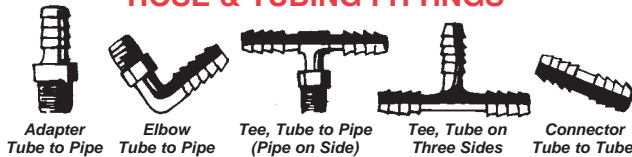


# HOSE FITTINGS – PIPE FITTINGS

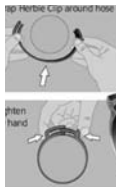
## HOSE & TUBING FITTINGS



Hose and tubing Insert Fittings are available in high density polyethylene or Nylon. Use polyethylene fittings with Tygon, nylon or soft rubber tubing to assemble low pressure instrument lines such as airspeed pitot and static lines. Use Nylon fittings in gravity-feed fuel lines and engine breather lines.

Fitting Type	Size	Polyethylene		Nylon	
		Part No.	Price Each	Part No.	Price Each
<b>ADAPTER</b> Tube to pipe	3/16Tx1/8P	0700-150	.	0701-150	.
	1/4Tx1/8P	0700-153	.	0701-153	.
	5/16Tx1/8P	0700-156	.	0701T-15	.
	3/8Tx1/8P	0700-158	.	0701-158	.
<b>ELBOW</b> Tube to Pipe	1/4Tx1/4P	0700-110	.	0701-110	.
	3/8Tx1/4P	0700-162	.	0701-162	.
	1/4Tx1/8P	0710-153	.	0711-153	.
	3/8Tx1/8P	0710-158	.	0711-158	.
<b>Tube to Tube</b>	1/4Tx1/4P	0710-110	.	0711-110	.
	3/8Tx1/4P	0710-162	.	0711-162	.
	1/4Tx1/4T	0710-015	.	0711-015	.
<b>REDUCING CONNECTOR</b>	3/8Tx3/8T	0710-020	.	0711-020	.
	1/4Px1/8P	0725-153	.	0726-153	.
	3/8Px1/8P	0725-161	.	0726-161	.
<b>TEE</b> Tube to pipe	3/8Px1/4P	0725-162	.	0726-162	.
	1/4Tx1/4Tx1/8P	0715-153	.	0716-153	.
	3/8Tx3/8Tx1/4P	0715-162	.	0716-162	.
<b>TEE</b> All Tube	1/4Tx1/4Tx1/4P	0715-110	.	0716-110	.
	3/16Tx3/16Tx3/16T	0715-011	.	0716-011	.
	1/4Tx1/4Tx1/4T	0715-015	.	0716-015	.
<b>CONNECTOR</b> Tube to Tube	3/8Tx3/8Tx3/8T	0715-020	.	0716-020	.
	1/4Tx1/4T	0705-015	.	0706-015	.
	3/8Tx3/8T	0705-020	.	0706-020	.

## HERBIE CLIP HOSE CLAMPS



The Herbie Clip hose clamp is the original double toothed (double row of teeth) ratchet clamp. This makes the Herbie clip twice as strong (up to 200psi depending on hose work and spigot) as similar hose clamps with a single row of teeth.

The Herbie Clip hose clamp combines its high strength with other key features such as: non-corrosive and resistant to many chemicals, simple to install can be fitted before or after the hose is in place, minimum leak path, lightweight, easy to use (no sharp edges to cut the operators), fully compliant with ROHS, UL listed (nylon 6.6.)

CLIP SIZE	MIN. DIA. (in)	MAX DIA.(in)	PART NO.	PRICE
A	.22	.26	05-02698	.
AA	.26	.31	05-02699	.
B	.31	.36	05-02701	.
C	.40	.47	05-02702	.
CC	.44	.51	05-02695	.
D	.47	.54	05-02703	.
E	.52	.59	05-02704	.
F	.59	.67	05-02705	.
G	.67	.75	05-02706	.
H	.71	.81	05-02696	.
J	.80	.91	05-02707	.
K	.87	.98	05-02708	.

## HERBIE CLIP HOSE CLAMP TOOLS



**INSTALLATION TOOL**  
Recommended for medium volume use.  
Fits sizes A to K.  
P/N.....05-02709 .....

### REMOVAL TOOL

It is easy to install and remove using a choice of manual.  
P/N.....05-02710 .....



## BRASS POLY-FLO FITTINGS

Poly-Flo Flareless tube fittings consist of a brass body, nut and sleeves. Use with PolyFlo, PVC or Nylaflo pressure tubing. The Poly-Flo fittings have the same configuration as Nylo-Seal fittings of the same basic part number.

261UB - NUT WITH SLEEVE			
Tube O.D.	Thread Size	Part Number	Price Each
1/8	5/16-24	261UB-02	.
3/16	3/8-24	261UB-03	.
1/4	3/8-24	261UB-04	.

262P - UNION			
Tube O.D.	Thread Size	Part Number	Price Each
1/8	--	262P-02	.
3/16	--	262P-03	.
1/4	--	262P-04	.

264P - UNION TEE			
Tube O.D.	Thread Size	Part Number	Price Each
3/16	--	264P-03	.
1/4	--	264P-04	.

266P - FEMALE CONNECTOR			
Tube O.D.	Pipe Thread	Part Number	Price Each
1/8	1/8	266P-02x02	.
3/16	1/8	266P-03x02	.

268P - MALE CONNECTOR			
Tube O.D.	Pipe Thread	Part Number	Price Each
1/8	1/8	268P-02x02	.
3/16	1/8	268P-03x02	.
1/4	1/8	268P-04x02	.

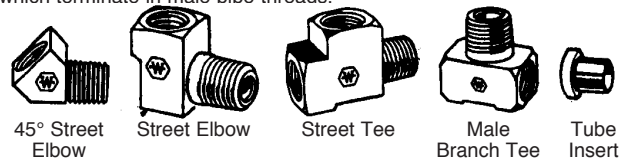
269P - MALE ELBOW			
Tube O.D.	Pipe Thread	Part Number	Price Each
3/16	1/8	269P-03x02	.
1/4	1/8	269P-04x02	.

270P - FEMALE ELBOW			
Tube O.D.	Pipe Thread	Part Number	Price Each
3/16	1/8	270P-03x02	.

272P - MALE BRANCH TEE			
Tube O.D.	Pipe Thread	Part Number	Price Each
3/16	1/8	272P-03x02	.

## WEATHERHEAD BRASS PIPE FITTINGS

These brass elbows and tees provide flexibility in the routing of lines which terminate in male pipe threads.



### 45° STREET ELBOW

Part Number	Pipe Thread	Price Each
3350x2	1/8	.
3350x4	1/4	.
3350x6	3/8	.

### 90° STREET ELBOW

Part Number	Pipe Thread	Price Each
3400x2	1/8	.
3400x4	1/4	.
3400x6	3/8	.

### MALE BRANCH TEE

Part Number	Pipe Thread	Price Each
3600x2	1/8	.
3600x4	1/4	.
3600x6	3/8	.

### STREET TEE

Part Number	Pipe Thread	Price Each
3750x2	1/8	.
3750x4	1/4	.
3750x6	3/8	.

## MISC. WEATHERHEAD BRASS FITTINGS

Part No.	Description	Size	Price Each
2030-4	Tube Insert*	1/8ODx3/32ID	.
3220x4x2	Bushing	1/8FPx1/4MP	.
6100x2	Nut	1/8"	.
6200x2	Male Connector	1/8Tx1/8P	.
66x2	Fml Connector	1/8Tx1/8P	.

\* Used for Long-EZ brake fittings.

## WEATHERHEAD BARB-TITE REUSABLE HOSE ENDS



Designed for use with hoses with maximum working pressure up to 250 PSI. Easy to assemble and disassemble.

Part No.	Description	Hose I.D.	Pipe Size	Cut-off Factor	Price Each
10006B-102	Straight Pipe	3/8"	1/8"	1-1/2	.
10006B-104		3/8"	1/4"	1-1/2	.
10006B-106		3/8"	3/8"	1-11/16	.
10006B-C02	90° Pipe	3/8"	1/8"	3/8	.
10006B-C04		3/8"	1/4"	3/8	.



## BRASS TUBE FITTINGS

Description	Part No.	Price
Brass Tube Fitting 3/8 inch Pipe x 3/8 inch	04-00833	.
Brass Tube Fitting 1/4 inch Pipe x 3/8 inch	04-00834	.

HA