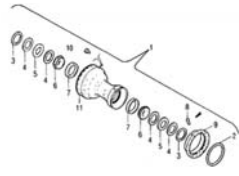


WHEELS & BRAKES

CLEVELAND WHEEL & BRAKE CONVERSION KITS

REPLACE 800 x 4 WHEELS ON PIPER AIRCRAFT



A bolt-on 600 x 6 wheel and brake conversion kit for Piper models: J3, J5C, PA11, PA12, PA14, PA15, PA16, PA17, PA18 & PA20 PA18-150 & PA18A-150 with Form 337. The 199-71-STC kit comes complete with STC paperwork so form 337 is not required. Accommodates tire sizes 600 x 6, 700 x 6, 800 x 6. No landing gear modifications required. Minor modification of hydraulic line required. Uses double puck brakes. Fits 1-1/4" diameter axle size only. Fits Piper J4/J5 but STC does not cover these aircraft.

Magnesium Model for general use

P/N 199-71

P/N 199-71-STC (w/full STC paperwork)

Aluminum Model for "AG" Service

P/N 199-71A

Part No.	Description	Qty
040-09804	Wheel Assy.	2
030-06602	Brake Assy.	2
067-02900	Spacer	2
0 67-03200	Spacer	2
040-07602	Nose Wheel Assy.	1
067-03100	Spacer	2
157-01000	Dust Shield	2
102-00600	Screws	6
095-15100	Washers	6
207-00300	Hydraulic Line	2
50-29	Installation Drawing NLG	1
50-30	Installation Drawing MLG	1
	Supplemental type cert.	1

#199-52 NAVION CONVERSION KIT

Complete kit for co version to Cleveland 700 x 8 main gear and 600 x 6 nose wheel on Navion Models - A, B, C, D, E, F, G & H.
P/N 199-52

#199-52A NAVION CONVERSION KIT

Kit for conversion of main gear only.
P/N 199-52A

REQUEST QUOTATION ON UNLISTED MODELS

PIPER AZTEC - BRAKE

P/N 199-63

Description	Part No.	Qty.
Brake Assembly	30-96	2
Brake Disc	164-57	2
Nameplate	166-74	2
Installation Instructions	E.S.B. 7000-4	1



CESSNA - WHEEL & BRAKE

P/N 199-46

P/N 199-46C (Chrome)

(6.00x6) FOR CESSNA MODELS: 120, 140, (SN 8004 thru 13399), 140A (SN 13400 and up), 170, 170A, 170B, 172, 172A thru 172E, 175, 175A, 175B, 175C, P172D, 180, 180A thru 180E, 182, 182A thru 182G.

Description	Part Number	Qty.
Wheel Assy.	040-09701	2
Brake Assy.	030-06301	2
Bushing	145-02200	8
Bushing	145-01000	4
W & B Assembly Dwg.	20-134	1
Installation Instructions	50-24	1
Installation Instructions	50-25	1
Installation Instructions	50-26	1
Supplemental Type Certificate		1

GLOBE SWIFT

P/N 199-48

P/N 199-48C (Chrome)

Wheel and Brake Conversion Kit (6 00 X 6) for Globe Swift Models GC-IA, GC-IB.
NOTE: It will be necessary to change master cylinders and obtain the necessary axle hardware for conversion, Ref. dwg. 50-28. These parts can be obtained through Beech aircraft.

Description	Part Number	Qty.
Brake Assembly	030-07902	2
Wheel Assembly	040-11303	2
Spacer	067-02400	2
W & B Assembly Dwg.	20-130	1
Installation Drawing	50-23	1
Supplemental Type Certificate		1

BEECH - WHEEL & BRAKE

P/N 199-49

P/N 199-49C (Chrome)

(6.00x6) FOR BEECH AIRCRAFT MODELS: 35, A35 thru G35, 35R 35-33, 35-A33, 35-B33, 35-C33, 35-C33A, E33, E33A E33C, F33, F33A, F33C, G33, H35, J35, K35, M35, N35, P35, S35, V35, V35A, V35B, 36, A36.

Description	Part Number	Qty.
Brake Assembly	030-05400	2
Wheel Assembly	040-08300	2
Spacer	067-02600	2
W & B Assembly Dwg.	20-69	1
Installation Drawing	50-28	1
Supplemental Type Certificate		1

BEECH - WHEEL & BRAKE

P/N 199-50

(7.00x8) FOR BEECH AIRCRAFT MODELS: 35, A35 thru G35, 35R, H35, J35, K35, M35, N35, P35, S35, D55, D55A, E55, E55A 95, B95, B95A, D95A, E95, 95-55, 95-A55, 95-B55A, 95-B55B, 95-C55, 95-C55A.

Description	Part Number	Qty.
Brake Assembly	030-06600	2
Wheel Assembly	040-09800	2
Spacer	067-02500	2
Spacer	067-02700	2
W & B Assembly Dwg.	20-135	1
Installation Drawing	50-27	1
Supplemental Type Certificate		1

NOTE: It will be necessary to change master cylinders and obtain the necessary axle hardware for conversion, Ref. dwg. 50-27. These parts can be obtained through Beech aircraft.

CESSNA - WHEEL & BRAKE

P/N 199-60

P/N 199-60C (Chrome)

(6.00x6) FOR CESSNA MODELS: 180, 180A, B, C, D, E, F, H, J, 185, 185A, B, A185E, A185F, 206E, 206F, TU206E, TU206F, 210, 210A, B, C, 210K, L, T210K, T210L.

Description	Part Number	Qty.
Wheel Assembly	040-07502	2
Brake Assembly	030-05200	2
Installation Drawing (210 series)	50-34	1
Installation Drawing (180,185,206 Series)	50-35	1
Supplemental Type Certificate (210 series)		1
Supplemental Type Certificate (180,185,206 Series)	20-64	1

NOTE: Kit to be used only on aircraft with 6.00 x 6 tires.

CESSNA - WHEEL & BRAKE

P/N 199-62

P/N 199-62C (Chrome)

(8.00x6) FOR CESSNA MODELS: 180, 180A, B, C, D, E, F, H & J, 185, 185A, B, A185E, A185E, A185F, 206E, F, TU206E, TU206F.

Description	Part Number	Qty.
Wheel Assembly	040-07504	2
Brake Assembly	030-05213	2
Installation Drawing	50-36	1
Supplemental Type Certificate		1

NOTE: Kit to be used only on aircraft with 6.00 x 6 tires.

CESSNA - WHEEL & BRAKE

P/N 199-84

P/N 199-84C (Chrome)

CESSNA APPROVED RETROFIT FOR THE FOLLOWING AIRCRAFT:
150, F150, A150, FA150, 152, A152, F152, FA152, 177, 177RG, F177RG, 182, A182, F182

Description	Part Number	Qty.
Wheel Assembly	030-07500(1)	2
Brake Assembly	040-11300(2)	2
Installation Drawing	50-36	1

NOTE CESSNA CROSS REFERENCE NUMBERS

(1) C-163030-113(LH) C-163030-114(RH) (2) C-163001-0104

CESSNA - WHEEL & BRAKE

P/N 199-84A

P/N 199-84AC (chrome)

CESSNA APPROVED RETROFIT FOR THE FOLLOWING AIRCRAFT: 172, F172, R172, FR172

Description	Part Number	Qty.
Wheel Assembly	030-07501(1)	2
Brake Assembly	040-11300(2)	2
Installation Drawing	50-37	1

NOTE CESSNA CROSS REFERENCE NUMBERS

(1) C-163030-011(LH) C-163030-112(RH) (2) C-163001-0104

WE CARRY ALL CLEVELAND CONVERSION KITS

Cessna P210N	P/N 199-60A
Cessna 310, 320	P/N 199-64
Cessna 421, 340, 401, 402, 414	P/N 199-76
Ercoupe	P/N 199-69
Beech Duke	P/N 199-73
Beech Musketeer	P/N 199-124
Stinson	P/N 199-87
Raytheon	P/N 199-123
Raytheon	P/N 199-124C
Raytheon	P/N 199-90

PLEASE REQUEST QUOTE ON ANY UNLISTED KITS.

LG