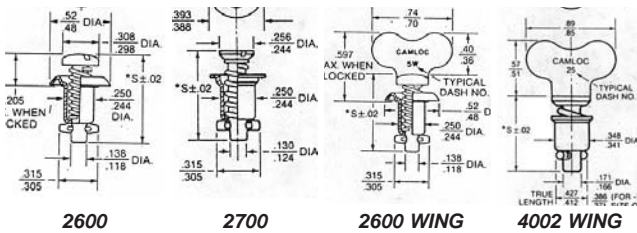


CAMLOC FASTENERS

The 2600 and 2700 series Camloc fasteners exceed requirements for MIL-F-5591, Style 3, Size 2. Shear and tensile strength: 300 lbs. (ultimate), 200 lbs. (rated). Studs and washers listed are made of steel. The receptacles are made of copper base alloy. All components listed are rated to 450° F. The 4002 series fasteners are considerably stronger than the 2600 and 2700 series. Shear and tensile strength: 1050 lbs. (ultimate), 700 lbs. (rated). All studs and grommets listed are made of steel. Rated to 450° F.



2600 STUDS

Dash No.	CAD Plated		Stainless		CAD Plated	
	2600 Slot Price Ea	26S8 Phillips Price Ea	2600 Slot Price Ea	Wing Price Ea	Price Each	Price Each
-1			-1S	---	---	---
-2			-2S		2600-2W	
-3			-3S		2600-3W	
-4			-4S		2600-4W	
-5			-5S		2600-5W	
-6			-6S		2600-6W	
-7			-7S		2600-7W	
-8			-8S		2600-8W	
-9			-9S		2600-9W	
-10			-10S		2600-10W	
-11			---	---	2600-11W	
-12			---	---	2600-12W	
-13			---	---	---	---
-14			---	---	2600-14W	

2700 STUDS

Dash No.	CAD Plated		Stainless	
	2700 Slot Price Ea	27S3 Phillips Price Ea	Dash No.	2700 Slot Price Ea
-1			-1S	
-2			-2S	
-3			-3S	
-4			-4S	
-5			-5S	
-6			-6S	
-7			-7S	
-8			-8S	
-9			-9S	
-10			-10S	
-11			---	---
-13			---	---
-14			---	---

4002 STUDS

Dash No.	CAD Plated / Stainless							
	4002 CAD Plated Slot Price Ea	40S5 CAD Plated Phillips Price Ea	SS Phillips 40S5 Price Ea	Dash No.	4002 SS Slot Price Ea	Wing CAD Plated Price Ea	Price Each	Price Each
-2			40S5-2S	-2S		4002-2W		
-3			40S5-3S	-3S		4002-3W		
-4			40S5-4S	-4S		4002-4W		
-5			40S5-5S	-5S		4002-5W		
-6			40S5-6S	-6S		4002-6W		
-7			40S5-7S	-7S		---	---	---
-8			40S5-8S	-8S		4002-8W		
-9			40S5-9S	-9S		4002-9W		
-10			40S5-10S	---		4002-10W		
-11			---	---		4002-11W		
-12			---	---		4002-12W		
-13			---	---		---	---	---
-14			---	---		---	---	---
-15			---	---		---	---	---
-16			---	---		---	---	---
-17			---	---		---	---	---

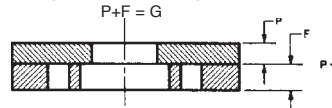
RECEPTACLES

Rivet Holes	2600, 2700 Series Part No.	Price Each	4002 Series Part No.	Price Each
Plain	212-12N		214-16N	
Cntersunk	212-12ND*		214-16ND*	
Plain	Floating Bronze		244-16	

2600 / 2700 STUD LENGTH SELECTION

Total material thickness "G" consists of the thickness of all materials to be fastened. This must include the thickness of the material "P" to which the stud assembly is attached, the material "F" to which the receptacle is attached plus gaskets (if used) and allowance for paint or other protective finishes. If the total thickness is near the upper limit of the stud grip range, the next longer stud should be used. This will still maintain positive locking of the fastener under vibration.

P (panel thickness)062
 F (frame thickness) + .062
 GRIP (total thickness) = .124



STUD SELECTION TABLE Using 212-12 Receptacle

Total Grip Thickness	Use 2600	Use 2700
.020 - .059	2600-1	2700-1
.060 - .089	2600-2	2700-2
.090 - .119	2600-3	2700-3
.120 - .149	2600-4	2700-4
.150 - .179	2600-5	2700-5
.180 - .209	2600-6	2700-6
.210 - .239	2600-7	2700-7
.240 - .269	2600-8	2700-8
.270 - .299	2600-9	2700-9
.300 - .329	2600-10	2700-10
.330 - .359	2600-11	2700-11
.360 - .389	2600-12	2700-12
.390 - .419	2600-13	2700-13
.420 - .449	2600-14	2700-14

4002 SERIES (LARGE HEAD) STUD SELECTION

To select the proper length stud, first select the grommet, for example 4002-G. Next, select the receptacle, such as 214-16. After determining the total grip thickness, use the grommet column under which the selected grommet and receptacle appear. Use the dash number which appears opposite the determined total grip thickness.

Example: If the total determined grip thickness "G" was .144, the stud dash number for the above 4002-G grommet and 214-16 receptacle would be -4. The stud part number would be 4002-4.

Total Grip Thickness Range "G"	Stud Dash Number	
	4002-G Grommet & 214-16 Receptacle	4002-N, 4002-O Grommet & 214-16 Receptacle
.021 - .050	--*	-1
.055 - .080	--*	-2
.081 - .110	-2*	-3
.111 - .140	-3	-4
.141 - .170	-4	-5
.171 - .200	-5	-6
.201 - .230	-6	-7
.231 - .260	-7	-8
.261 - .290	-8	-9
.291 - .320	-9	-10
.321 - .350	-10	-11
.351 - .380	-11	-12
.381 - .410	-12	-13
.411 - .440	-13	-14
.441 - .470	-14	-15
.471 - .500	-15	-16
.501 - .530	-16	-17
.531 - .560	-17	-

*4002-G grommet requires .090" minimum grip.

2600, 2700 SERIES RETAINING WASHERS

Retaining washers are required for studs of -5 length or greater. Use split washer 2600-SW2 where it is desirable to have the stud fall away for minimum internal projection. Use internal tooth washer 2600-LW where it is desirable to retain the stud assembly rigidly.

P/N 2600-SW-2 P/N 2600-LW.....

4002 SERIES GROMMETS & SNAP RINGS

Description	Part Number	Price Each
CAD Plated		
Flush Grommet	4002-G	
Plus-Flush Grommet	4002-N	
Stud Retaining Grommet	4002-O	
High Shear Flush Grommet	40G1-5	
Wide Area Grommet	4002-N3	
Grommet Retaining Ring	R4G	
High Shear Grommet Retaining Ring	R4T	
Camloc Retaining Ring	4002-SW	
Stainless		
Flush Grommet	4002-GS	
Flush Grommet	4002-HS	
Plus Flush Grommet	4002-NS	
Flush Grommet	4002-OS	