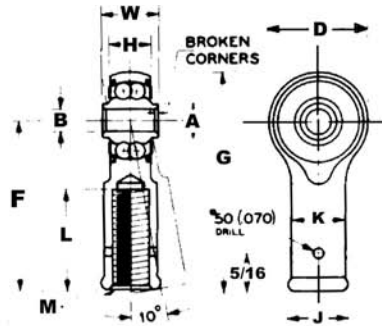
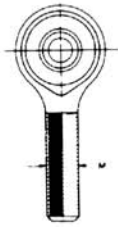


BEARINGS



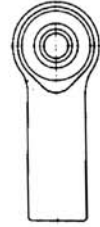
AN 946 MS 21151
MALE THREADED SHANK



AN 951 MS 21153
FEMALE THREADED SHANK



AN948 HOLLOW SHANK
SOLID SHANK



MS21152
MS21150

Bearing No.	MS Dash No.	Bore	D	W	H	A	F	G	L	J	K	M		Balls	Lbs. Approx.	Weight Type Seal	Price Each	
		Outside Diam.	Width Inner Ring	Width Outer Ring	Shoulder Diam. Inner Ring (Approx.) In.	Bore Center to end of Shank +.010 -.010 In.	Overall Dimension +.010 -.010 In.	Thread Length of Shank Hole Depth In.	Bead or Hex Diam. Across Flats In.	Shank Diam. +.010 -.010 In.	Thread Or Drill Size Inches	Size	Pitch Diam.					No.
MALE THREAD MS 21151																		
												10-32	.1697	20	1/8"	.04	Solid Seal	.
RE3ML3	-1	.1900	.781	.437	.328	.281	1.375	1.766	.750			LH	.1667					
												10-32	.1697					
RE3MR3	-2	.1900	.781	.437	.328	.281	1.375	1.766	.750			RH	.1667	20	1/8"	.04	Solid Seal	.
												3/8"-24	.3479					
RE3M6A	-3	.1900	.969	.500	.407	.304	2.031	2.516	1.313			RH	.3449	24	1/8"	.05	Solid Seal	.
												3/8"-24	.3479					
RE3M6-2N	-4	.1900	.781	.437	.328	.281	1.375	1.766	.750			LH	.3449	20	1/8"	.05	Solid Seal	.
												3/8"-24	.3479					
REP4M6	-8	.2500	.938	.593	.438	.345	1.875	2.344	1.125			RH	.3449	22	5/32"	.07	Plyo-Seal	.
												3/8"-24	.3479					
REP4ML6	-9	.2500	.938	.593	.438	.345	1.875	2.344	1.125			LH	.3449	22	5/32"	.07	Plyo-Seal	.
REP5M6	-10											3/8"-24	.4050					
RE5M10												5/8"-18	.5889				Solid Seal	.
FEMALE THREAD MS 21153																		
												1/4"-28	.2298					
REP3N*	-1	.1900	.781	.437	.328	.281	1.375	1.766	.750	.438	.375	RH	.2268	20	1/8"	.05	Plyo-Seal	.
												5/16"-24	.2884					
REP3N2***	-2	.1900	.781	.437	.328	.281	1.375	1.766	.750	.438	.438	RH	.2854	20	1/8"	.06	Plyo-Seal	.
RE3F4	-3	.1900	.781	.500	.328	.281	1.375	1.766	.750	.438	.375	RH	.2268	20	1/8"	.06	Solid Seal	.
												5/16"-24	.2884					
REP4F5	-6	.2500	.938	.593	.438	.345	1.469	1.938	.750	.438	.438	RH	.2854	22	5/32"	.07	Plyo-Seal	.
HOLLOW SHANK MS 21152																		
REP3H5**	-1	.1900	.781	.437	.328	.281	1.375	1.766	.875		.435		.272	20	1/8"	.06	Plyo-Seal	.
RE4H6																	Solid Seal	.
REP4H6	-2	.2500	.938	.593	.438	.345	1.875	2.344	1.219		.625		.386	22	5/32"	.12	Plyo-Seal	.
REP4H8	-3	.2500	.938	.593	.438	.345	1.625	2.093	.875		.625	33/64	.515	22	5/32"	.08	Plyo-Seal	---
SOLID SHANK MS21150																		
REP4S10	-2	.2500	.938	.593	.438	.345	1.875	2.344			.625		SOLID	22	5/32"	.16	Plyo-Seal	.



*Dimensionally Same as Heim F34-14
 **Dimensionally Same as Heim F31-14
 ***Dimensionally Same as Heim F35-14

Bearings with the letter "P" in part number are new manufacture, with Plyoseals.
 Bearings without the letter "P" in part number are new surplus, with solid metal seals.