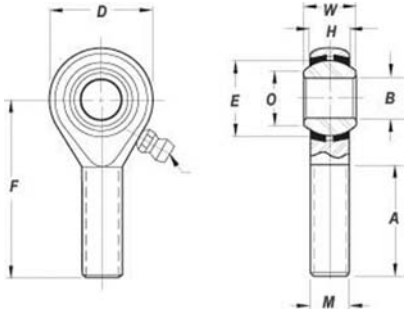


BEARINGS

HEIM ROD ENDS MALE THREADED M AND HM SERIES



Rod Ends male threaded (HM M Series)

- Outer Member: Aircraft Quality Carbon Steel, Magnetic particle inspected, with protective coating for corrosion resistance.
- Ball: 52100 Alloy Steel, heat treated, chrome plated.
- Inserts: Brass, 16 size has one piece carbon steel race.

Heim "M" and "MD" series bearings are now manufactured in magnafluxed version only. As old stock is depleted, magnafluxed equivalents will be furnished as substitutes at current (higher) prices unless otherwise requested on the order.

"L" in rod end number designates left hand thread. In this series, the "D" in rod end number (MD35 14) denotes drilled hole in the shank. Add suffix "G" to indicate lubricator is required. Example: HM-SG. Add suffix "FG" to indicate flush type lubricator is required. Example: M34-14FG. Lubricator (G) (FG) available with minimum qty. required. Please Call for Pricing.

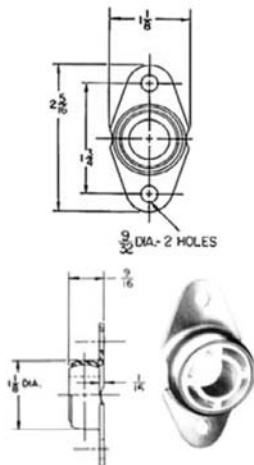
AP

Rod End No.	Equiv. Spherco No.	DIMENSIONS											Max Static Radial Load in Pounds Approx.	Approx. Weight in Pounds	Price Each		
		Bore	ball Width	Housing Width	Ball Flat Diam.	Head Diam.	Length to center of ball	Overall Length	Other Dimensions								
		B	W	H	O	D	F	G	A	N	Ball Diam.	M					
M34-14M	NONE	.1900	.437	.328	.273	.750	1.560	1.935	1.000			33/64	1/4"-28	1,695	.05	.	
MD35-14	NONE	.1900	.437	.328	.273	.875	1.375	1.812	.750			33/64	5/16"-24	2,184	.07	.	
MDL35-14													UNF			.	
MD36-14	NONE	.1900	.437	.328	.273	.750	1.375	1.750	.750			33/64	3/8"-24	2,848	.07	.	
MDL36-14													UNF			.	
MD36-16M	NONE	.1900	.500	.375	.321	.812	1.812	2.219	1.062			19/32	3/8"-24	2,769	.08	.	
MDL36-16													UNF			---	
M44-14	NONE	.2500	.437	.304	.354	.812	1.562	1.968	1.000			9/16	1/4"-28	1,695	.06	.	
ML44-14													UNF			---	
MD46-15	NONE	.2500	.484	.335	.395	.875	2.312	2.750	1.500			5/8	3/8"-24	3,151	.10	.	
MDL46-16													UNF			.	
HM-2M	NONE	.1250	.250	.187	.187	.469	.937	1.172	.500			5/16	6-32	452	.02	.	
HML-2M													UNC			.	
HM-2AM	NONE	.1562	.281	.219	.249	.562	1.125	1.406	.625			3/8	8-32	666	.02	---	
HML-2AM													UNC			.	
HM-3M	TRE-3	.1900	.312	.250	.306	.625	1.250	1.563	.750			7/16	10-32	910	.03	.	
HML-3M	TREL-3												UNF			.	
HM-4M	TRE-4	.2500	.375	.281	.355	.750	1.562	1.937	1.000			33/64	1/4"-28	1,695	.05	.	
HML-4M	TREL-4												UNF			.	
HM-5M	TRE-5	.3125	.437	.344	.447	.875	1.875	2.312	1.250			5/8	5/16"-24	2,205	.08	.	
HM-6M	TRE-6	.3750	.500	.406	.517	1.000	1.938	2.438	1.250			23/32	3/8"-24	3,172	.11	.	
HML-6M	TREL-6												UNF			.	
HM-7M	TRE-7	.4375	.562	.437	.586	1.125	2.125	2.688	1.375			13/16	7/16"-20	4,633	.16	.	
HML-7M	TREL-7												UNF			---	
HM-8M	TRE-8	.5000	.625	.500	.698	1.312	2.438	3.094	1.500			3	15/16	1/2"-20	5,876	.24	.
HML-8M	TREL-8												UNF			.	

UNF= Universal Fine, UN=Universal Coarse

TRIANGLE MFG. BEARINGS

Manufactured by Triangle Mfg. Co., these bearings are spherical on the outside and are contained in a flanged, stamped metal cage, so they provide sliding, rotating, and pivoting motion. The bearings are available in nylon, bronze, or iron as shown in the table below. The FMN10 is used in the wing roots and on the torque tubes inside the fuselage of the Cozy Mark IV.



PART NO.	I.D.	BEARING MATERIAL	PRICE EA.	PART NO.	I.D.	BEARING MATERIAL	PRICE EA.
FMN4	1/4"	Nylon	.	FM1508P	1/2"	Iron	.
FMN5	5/16"	Nylon	.	FM1408P	1/2"	Bronze	.
FMN6	3/8"	Nylon	.	FMN10	5/8"	Nylon	.
FM1406P	3/8"	Bronze	.	FM1510P	5/8"	Iron	.
FMN7	7/16"	Nylon	.	04-01658	5/8"	Bronze	.
FMN8	1/2"	Nylon	.	FMN12	3/4"	Nylon	.
				FM1512P	3/4"	Iron	.