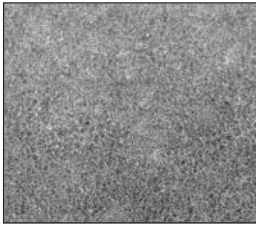


FOAM

CM

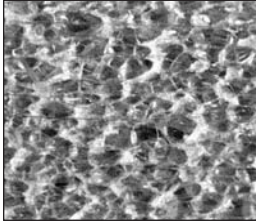
STYROFOAM – SMALL CELL



STYROFOAM FB – Low density (2 lb./ft³). Tight closed cell structure leaves no voids between the cells. The result is high compressive strength and unequalled resistance to water penetration. Has excellent resistance to bases, salts, alcohols and most acids but not to petroleum based solvents. Cuts smoothly with a hot wire for airfoil shapes.

Foam Type	Density	Thickness	Sheet Size	Part No.	Price/Sheet
Styrofoam (Blue) Small Cell	2 Lb/Ft ³	5/8"	24" x 48"	01-09400	.
		5/8"	24" x 96"	01-09500	.
		3/4"	24" x 96"	01-09600	.
		1"	24" x 48"	01-09700	.
		1"	24" x 96"	01-09800	.
		1-1/2"	24" x 96"	01-09900	.
		2"	24" x 48"	01-10000	.
		2"	24" x 96"	01-10100	.
		4"	24" x 48"	01-10200	.

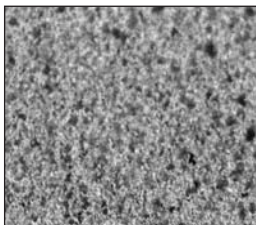
POLYSTYRENE – LARGE CELL



POLYSTYRENE – LARGE CELL This blue large cell expanded foam is 2 lb. density and cuts easily using a hot wire to airfoil shapes. Compatible with most adhesives, but should be used only with epoxies, not polyester resins. Will dissolve in fuels and solvents.

Foam Type	Density	Thickness	Sheet Size	Part No.	Price/Sheet
Styrofoam FB (Blue) Large Cell		8"	16" x 4"	01-37600	.
		8"	16" x 42"	01-10600	.
		8"	16" x 67"	01-10800	.
		8"	16" x 109"	01-10900	.
		10"	20" x 96"	01-11100	.
Polystyrene (Round Corners)	2 Lb/Ft ³	10"	24" x 96"	01-11200	.
		10"	24" x 96"	01-11200	.

POLYURETHANE FOAM



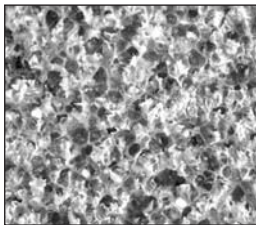
URETHANE – This foam is easily contoured using a large knife, and then sands well to final form. Excellent for producing the fuselage, wing tips, and other curved parts. It is fuel resistant and can be used for fuel cells. Compatible with most adhesives. Do not hot wire polyurethane foam. Color: tan or green.

Foam Type	Density	Thickness	Sheet Size	Part No.	Price/Sheet
Urethane (Tan or Green)	2 Lb/Ft ³	1/2"	24" x 48"	01-11300	.
		1/2"	48" x 48"	01-11400	.
		3/4"	24" x 48"	01-12150	.
		3/4"	24" x 96"	01-12160	.
		1"	24" x 48"	01-11500	.
		1"	24" x 96"	01-11600	.
		1"	48" x 96"	01-11700	.
		2"	24" x 48"	01-11900	.
		2"	24" x 96"	01-12000	.
		2"	48" x 96"	01-12100	.
		2"	48" x 96"	01-12100	.

CAUTION

DO NOT USE HOT WIRE!

DIVINYCELL FOAM



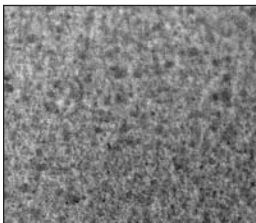
DIVINYCELL – A closed cell medium to high density foam which has high compression strength, durability, and excellent fire resistance. Can be vacuum formed to compound shapes and can be bent using heat. Compatible with polyester, vinylester, and epoxy resins.

Foam Type	Density	Thickness	Sheet Size	Part No.	Price/Sheet		
Divinycell PVC (Blue) Type H45	3 Lb/Ft ³	1/4"	32" x 48"	01-12300	.		
		3/8"	32" x 48"	01-12400	.		
		5/8"	24" x 47"	01-12500	.		
		3/4"	15" x 26"	01-12600	.		
		3/4"	32" x 48"	01-12700	.		
		1"	32" x 48"	01-12800	.		
		1-3/4"	32" x 48"	01-12900	.		
		Eracer	Eracer	2"	48" x 96"	01-12920	.
				2"	24" x 48"	01-12910	.
3"	48" x 96"			01-12940	.		
3"	24" x 48"			01-12930	.		
Divinycell PVC (Tan) Type H100	6 Lb/Ft ³	1/4"	37" x 37.5"	01-13000	.		
		1"	6" x 10"	01-13100	.		
		1"	10" x 12"	01-13200	.		
Divinycell PVC	15.6 Lb./Ft ³	1/4"	24.8" x 27.75"	01-13300	.		

CAUTION

DO NOT USE HOT WIRE!

LAST-A-FOAM



LAST-A-FOAM – Rigid, Polyether Polyurethane foam with fine closed-cell structure, light cream-yellow color. LAST-A-FOAM® is wonderfully versatile for sandwich-core applications. It cuts and shapes easily with common woodworking tools, and bonds to itself and other materials with most epoxy, polyester, or urethane-type adhesives. LAST-A-FOAM® is unaffected by water, fuels and most solvents, and paint finishes are easily applied. It is frequently used in regular molds after the gel-coat and first two layers of glass are installed; the LAST-A-FOAM® is added and another layer of glass applied for a strong, light-weight sandwich.

Foam Type	Density	Thickness	Sheet Size	Part No.	Price/Sheet
Last-A-Foam Urethane/Polyester (Yellow) 275° F	4.5 Lb/Cu. Ft.	10mm	24" x 96"	01-13400	.
		1/4"	24" x 48"	01-13550	.
		1/4"	24" x 96"	01-13500	.
		3/8"	24" x 96"	01-13600	.
		1/2"	24" x 96"	01-13700	.
		3/4"	24" x 96"	01-14000	.
Last-A-Foam Urethane/Polyester (Yellow) 275° F	6Lb/Cu. Ft.	1/4"	24" x 48"	01-14100	.
		3/8"	24" x 48"	01-14200	.
		3/4"	24" x 48"	01-14250	.
Last-A-Foam Urethane/Polyester (Yellow) 275° F	8 Lb/Cu. Ft.	1"	16" x 24"	01-01048	.
Last-A-Foam Urethane/Polyester (Yellow) 275° F	18 Lb/Cu. Ft.	0.200"	12" x 48"	01-14400	.
		1/4"	12" x 48"	01-14500	.

CAUTION

DO NOT USE HOT WIRE!