

WESTACH INSTRUMENTS

2-1/4" ENGINE INSTRUMENTS

Guaranteed accurate within 2% with a 1-yr. warranty. Weight - an unbelievable 4oz. These instruments are self powered by the thermocouple, except for the lighting.

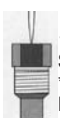
CYLINDER HEAD TEMPERATURE

- 100-700°F P/N 2A1
- 25°-375°C P/N 2A1-2
- SENDERS: CHT Senders have 4 ft. leads.
- 14mm gasket type (VW, Rotax)...P/N 712-4W
- 18mm gasket type (Cont,Lyc.)...P/N 712-5W
- Bayonet type 3/8" x 24 thread..P/N 712-7D
- Bayonet type 1/8" NPT thread P/N 712-7DJ
- (All Rotax) P/N 712-912K

EXHAUST GAS TEMPERATURE

- 700-1700°F/350-950°C P/N 2A2
- 100-1900°F/100-1000C..... P/N 2A2-1
- 400-900°C P/N 2A2-2
- 4000-1600°F/200-850°C P/N 2A2-7
- SENDERS - Clamp type senders with 3/16" diameter probe. EGT Senders have 4 ft leads.
- 1" long tip P/N 712-2DVK
- 1/2" long tip P/N 712-20DVK
- Long tip 1/4" threads P/N 712-4D
- 3/8-24 for Lycomings..... P/N 712-4D1
- Long tip for VW (1/12" OD tailpipe)..... P/N 712-24DVK
- (All Rotax)..... P/N 712-32DVK
- Bayonet K type, EGT probe for Rotax P/N 712-4D6K
- Exposed Tip, model 712-20DVK - Hose clamp style 1/2" probe. P/N 10-01300.....

Note: Westberg 712 Series Thermocouples are for Non-TSO'd CHT & EGT Gauges only. They have two small pins which are the same size. 712 Series Thermocouples cannot be used with Non TSO'd Gauges.



OIL TEMPERATURE

- 100° - 260°F P/N 2A9-2*
- Sending Unit..... P/N 399S7.....
- *Use Sender #399S9-7/8 for Cont & Lyc Engines. (5/8-18 Thread) P/N 399S9.....



OIL PRESSURE

- 0-80 PSI (w/sender) P/N K2A8MM
- SENDING UNIT (Available Separately) P/N 387-12S.....



FUEL PRESSURE

- 0-15 PS w/Sender(SET).....P/N K2A8-8MM



MANIFOLD PRESSURE GAUGE

- 2-1/4" Size 0-30 PSI..... P/N K2A4-6.....



FUEL LEVEL

- 2-1/4 FUEL LEVEL GA 0-5VDC - Non-TSO'd fuel quantity indicators available for single or dual tanks. Require 0-5Vcapacitance senders (not incl.)
- Instrument (Single) P/N 2A7V
- Instrument (Dual)..... P/N 2DA4V
- Sender (6"-12"Depth) P/N 10-00797
- Sender (12"- 24" Depth)..... P/N 10-00799
- Sender (6"-12" Depth-Bendable)..... P/N 395-5SB-5
- Sender (12"-24" Depth-Bendable)..... P/N 395-5S-1B-5

TSO CABLE 2-CONDUCTOR WITH SOCKET



- TSO Cable 2-Conductor 3' W/Socket P/N 10-02096.....
- TSO Cable 2-Conductor 15' W/ Socket P/N 10-02095.....
- TSO Cable 2-Conductor 10' W/ Socket P/N 10-02094.....

WESTACH BULLET CONNECTORS

Bullets are used to connect sockets and sleeves together on the back of Westach instruments. P/N 10-02795.....

*** These instruments may be powered by connection to 12V battery, magneto, distributor or alternator. If installation is to be made using other than 12V electric power, order one Magneto Adapter, P/N 103-18 (\$6.30) and one Fuse Adapter, P/N 10-17000 (\$6.30) for each instrument. For 24V operation, order one Adapter, P/N 329-24 (\$2.30) for each instrument.**

OUTSIDE AIR TEMPERATURE

- P/N 2A3-3.....
- Sending Unit.....P/N 399-OT

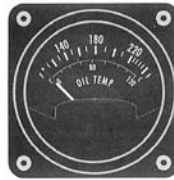


CARBURETOR AIR TEMP

- 50°C to 50°C, Provides instant icing check of carburetor. P/N 2A3-1
- SENDING UNIT - Fits 1/4-28 Thread P/N 399W



COOLANT TEMPERATURE



- 100° to 260°F, for aircraft and helicopters using coolants other than oil. P/N 10-01301*.....
- Sending Unit..... P/N 10-01249.....

Order one Type 381 Fuse Adapter for each tachometer installation as a safety measure against magneto failure.

- P/N 10-17000



AMMETER

- 30 to +30A, & #237-2A Shunt P/N K2A6-22..... **Set**
- 60 to +60A, & #237-3A Shunt P/N K2A6-15..... **Set**



HOURLMETER

- Power Range, 5V-40V, Record running time of engine. P/N 2A10-2
- No sender required.**



VOLTMETERS

- Check generator & alternator charging**
- 6-16 VDC..... P/N 2A5
- 0-35 VDC..... P/N 2A5-2.....
- No sender required.**

SELECTOR SWITCHES

These switches are used with the Westach CHT, EGT, or CHT/EGT gauges to allow multiple cylinder engine analyzing. Switches included with Engine Analyzer kits & Add-On kits on following pages, or can order separately below. Non-TSO'd. These switches have two small connectors of same size.



- 2-Position P/N 254-2F
- 4-Position P/N 254-4F
- 4-Position (Dual) P/N 254-4DF*
- 6-Position P/N 254-6F
- 6-Position (Dual) P/N 254-6DF*

***To convert dual EGT/CHT to Engine Analyzer. FAA APPROVED SWITCHES**

- 4-Position P/N 254-20EP
- 6-Position P/N 254-21EP
- 6-Position (Dual) P/N 254-21EDPP

These switches are furnished with 96" leads.

WESTACH EXTENSION LEADS

Complete extension leads, with connector terminals, for extending CHT or EGT leads up to Complete extension leads, with connector terminals, for extending CHT or EGT leads up to 10 ft. without affecting accuracy. Longer lengths give low reading, requiring recalibration of instrument.

- 18" Lead ..P/N 10-17900 4 Ft. Lead ... P/N 10-18000
- 6ft Lead ...P/N 10-18100 8 Ft. Lead P/N 10-18200
- 10ft Lead .P/N 10-18300 12 Ft. Lead .. P/N 10-18350

WESTACH TSO'D EXTENSION LEADS

TSO'D 2-Conductor EGT/CHT Extension Leads with sockets and sleeves at both ends.

- Westach TSO'D EGT/CHT 6ft Extension..... P/N 10-02161
- Westach TSO'D EGT/CHT 8ft Extension..... P/N 10-02162

WESTACH INSTRUMENT LIGHTING

An internal lighting fixture may be added to all 2-1/4" & 3-1/8" instruments. Comes with clear bulb and red & green boots.

- P/N 186..... .ea

IN