

WESTACH INSTRUMENTS

2-1/4-INCH DUAL INSTRUMENTS SAVE PANEL SPACE (SUPREME SPACE SAVERS)

TWO INSTRUMENTS IN ONE 2-1/4" SIZE CASE - PERFECT FOR THE HOME BUILDER

All pressure instruments come complete w/pressure senders only (matched to instrument). On all other instruments, order senders at bottom of page.



DUAL EGT-CHT
700-1700°F EGT
100-700°F CHT
P/N 2DA1 .

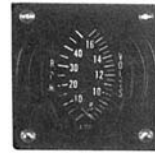


DUAL EGT
700-1700°F
P/N 2DA2 .



**DUAL OIL PRESSURE
OIL TEMPERATURE**
0-80 PSI/100-260°F
P/N2DA3MM .

Complete w/ oil pressure sender.



**DUAL TACHOME-
TETER VOLTMETER**
0-5000 RPM/6-16V
P/N 2DA6 .



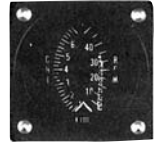
**DUAL
TACHOMETER**
0-5000 RPM
P/N 2DA5-2 .



DUAL FUEL LEVEL
Uses capacitance type
senders. 5V output.
P/N 2DA4V .



DUAL CHT
100-700°F
P/N 2DA8 .



**DUAL
TACHOMETER CHT**
0-5000 rpm/100-700°F
P/N 2DA9-5-2 .



DUAL VOLT-AMMETER
6-16V/0-30 A
P/N K2DA10-21
6-16KV/0-60 amp
P/N K2DA10-18.....
Complete with Shunt



**DUAL CARB TEMP-
OUTSIDE AIR TEMP**
-50° to +50° C.
P/N 2DA3-8 .
Order 399W & 399-OT
Senders Separately

3-1/8" WESTACH GAUGES



TWIN CHT
3-1/8" Size; Wt. 10 Oz.,
100-800°F
P/N 3DA8....



TWIN EGT
3-1/8" Size; Wt. 10 Oz.
700-1700°F
P/N 3DA2....



COMBINATION EGT & CHT
3-1/8" size, Wt.10oz.,
700-1700°F/ 100-800°F.
P/N 3DA1...

Order 1 EGT probe & 1 thermocouple.



RECORDING TACHOMETER
3-1/8" size Runs directly off magneto.
12V power required to run Hour Meter
0-3500 RPM ... P/N Y3AT32.....
0-5000 RPM ... P/N Y3AT5-2.....



EGT - CHT GAUGES
3-1/8" Square EGT P/N 3A2-1
3-1/8" Round EGT. P/N 3C2-1
Square CHT P/N 3A1
3-1/8" Round CHT. P/N 3C1

Order 2 thermocouples

All Pressure Instruments come complete with Pressure Senders only (matched to Instrument). On all other instruments order senders at bottom of page.

SPACE SAVING GAUGES - THE WESTACH QUADS

Four electric instruments in one standard size 3-1/8" aircraft case. Weight - only 6 oz. Guaranteed for accuracy within 2%. 1 year warranty. Get four "like" readings or four different ones. Order Senders below except for pressure instruments.



QUAD CHT
P/N 3AQ1...



QUAD EGT.
P/N 3AQ2...



**QUAD COMBO TACH/
EGT VOLTS/CHT**
P/N 3AQ7-3...



**QUAD COMBO VOLTS/CHT
OIL PRESS/OIL TEMP & OIL**
Press. Sender Only
P/N 3AQ5MM.....



**QUAD COMBO CHT/EGT
OIL PRESS/OIL TEMP**
P/N 3AQ4MM...

OTHER QUAD COMBOS AVAILABLE:

3AQ1-14CHT/Volts/EGT/Amps.....
3AQ4-8MMOP/Amps/OT/Volts

Over 75 Quad Combos available.

Request availability of unlisted models.

*With Senders

For custom quad gauges,
request quotation & exact
location of each function
as shown in the diagram.

WESTACH SENDERS

EGT 712-2DWK (Long Life) 1" Tip	Oil Pressure 387-12S (for old style gauge)
712-20DWK 1/2" Tip	Oil Temp..... 399S7 1/8" NPT.....
712-4D (1/4" Pipe Bayonet).....	Oil Temp..... 399S9 (CONT, LYC).....
712-4D1 (3/8"-24 for Lycomings)	Fuel Level... 395-5S-5 (6"-12" Depth)
712-4D6K	Fuel Level... 395-5SI-5 (12"-24" Depth)
(.8-1MM Bayonet for Rotax)	Fuel Level... 395-5SB-5 Bendable
712-4D2 (1/8" NPT).....	Fuel Level... 395-5S-1B-5 Bendable.....
CHT 712-5W (18 MM Thermocouple)	Temp Send. 399S10-1.5L.....
712-4W (14 MM Thermocouple)	Westberg SS Trans
712-7D (3/8-24 Bayonet)	387-100KV.....
712-9W (10MM Thermocouple).....	

POSITION #1

CHT: 100° - 700°F
EGT: 600° - 1600°F
OP (378 series only): 0-80#, 0-100#
FP (378 series only): 0-5#, 0-15#
PRES: 0-100#
FL: E - 1/2 - F
Volts: 6-16
OT: 100° - 260°F
RPM: 1000-7000

POSITION #2

CHT: 100° - 700°F
EGT: 600° - 1600°F; 600° - 1600°F
OP (378 series only): 0-80#, 0-100#
FP (378 series only): 0-5#, 0-80#
FL: E - 1/2 - F
Volts: 6-16
AT (outside air temp.): -60° to +100°F
Temp: 100° - 260°F
CT (carb. temp.): -60° to +100°F
CAT (chrg. air temp.): 100° - 400°F
RPM: 0-3500, 0-4000, 0-5000,
0-7000, 0-10000
AMP: -60° to +60°
MPH: 0-70
KPH: 0-100
WP: 0-40#

POSITION #3

CHT: 100° - 700°F
EGT: 600° - 1600°F
OP (378 series only): 0-80#, 0-100#
FP (378 series only): 0-5#, 0-80#
FL: E - 1/2 - F
Volts: 6-16
OT: 50° - 250°F
100° - 260°F
100° - 300°F
150° - 300°F
WT: 100° - 260°F
AT (outside air temp.): -50° to +100°F
RPM: 1000-7000
OT: 40° - 130°C

POSITION #4

CHT: 100° - 700°F
EGT: 600° - 1600°F
OP (378 series only): 0-15#, 0-80#, 0-100#
FP (378 series only): 0-80#
FL: F - 1/2 - E
Volts: 6-16, 18-28
OT: 100° - 260°F
WT: 100° - 260°F
Temp: 100° - 260°F
RPM: 1000-7000
AMP: -30° to +30°, -60° to +60°