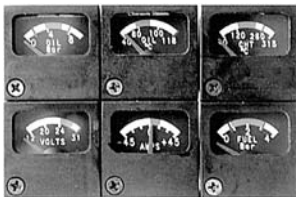


# INSTRUMENTS

## MITCHELL MINIATURE MODULAR GAUGES

This line of miniature engine gauges from Mitchell is ideal for a wide variety of general aviation applications. They measure nearly 1.5" square and are stackable. The modular design allows them to be plugged from the front of the panel. The units are internally lighted. Complete standard panels are also available as shown below.



\* FAA Approved

\*\* Do not use on Rotax. Use existing sender.

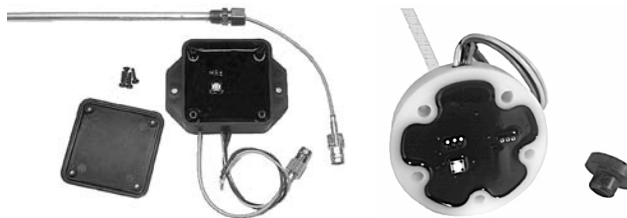
Part No.	Gauge	Price
10-10150	Fuel* Pressure 15 PSI	.
10-10165	Voltmeter (28V)	.
10-10152	Fuel Pressure 30 PSI	.
10-10166	Oil Pressure (100PSI)	.
10-03451	Oil Temp. (250°)	.
10-10154	Oil Temp (300°F)*	.
10-10168	Oil Pressure (9 Bar)	.
10-10155	Oil Temp (120°C)	.
10-10170	CHT 600°F (14V)	.
10-10156	Water Temp (250°F)	.
10-10172	CHT 300°C (28V)	.
10-10158	"Right" Fuel Qty.*	.
10-10174	45A Ammeter (12V)	.
10-10160	"Left" Fuel Qty.*	.
10-10162	"Fuel" Qty.*	.
10-10176	75A Ammeter (12V)*	.
10-10164	Voltmeter (12V)*	.

Backplate w/Pigtail	Sender P/N	Sender	Price
PM-114-6005	10-25065	Fuel Pressure*	.
PM-114-6006	10-25015**	Oil Temp 1/8 - 18NPT	.
	10-25180	Oil Temp 5/8 - 18VNF	.
	10-25005**	Water/Oil Temp 1/8-18NPT	.
	10-25175	Water/Oil Temp 5/8-18VNF	.
PM-114-6004	10-25135	Fuel Level*	.
PM-114-6001		No Sender Required	.
PM-114-6007	10-25045	Oil Pressure	.
PM-114-6003	10-25075	18MM CHT (Cont. Lyc)	.
	10-25080	14MM CHT VW, Rotax	.
PM-114-6002	10-25080	14MM CHT (VW, Rotax)	.
	10-10184	45 AMP Shunt	.
	10-10185	75 AMP Shunt*	.
	10-02122	Backplate w/ Pigtail	.

\* FAA Approved \*\* Do not use on Rotax. Use existing sender.

If individual gauges are ordered, the appropriate backplate with pigtail (\$9.95 each) must be ordered to mount and connect the gauge. If more than one gauge is ordered to be mounted together, it is a special order cluster that requires custom backplates as shown.

## PRINCETON CAPACITIVE FUEL PROBES



- **Easy Push Button Calibration** - Simple push buttons make calibration easy and accurate. No sensitive screw adjustments to make. Place the probe in tank, connect power and press EMPTY. Fill tank and press FULL. Calibration is complete.
- **Steady Readings** - Digital filtering minimizes the effects of fuel slosh providing greater accuracy.
- **Proven Design** - Designed specifically for the aircraft that are subject to harsh environments, such as vibration, temperature, and electrical noise. Probes designed for industrial applications can fail under these conditions. Proven reliability with over 4 years of history.
- **No Moving Parts** - There are not any parts to wear out. Will not require future maintenance or replacement.
- **Compatible Fuel Quantity Gauges** - UMA P/N: 18-110-1C1 (P/N 10-01717), 18-210-1C1 (P/N 10-01717); Westach P/N: 20A4V (P/N 10-01255) & 2A7V (P/N 10-01246)

Mounting Options:

- **Unique Pressfit Installation** - Can be mounted in plastic tank by drilling a 1/2" hole. A rubber grommet is used to hold the probe in place.
- **Standard SAE 5-Hole Bolt Pattern** - A backing plate and seal are used to secure the probe to the tank. Standard Lengths of 12, 18, & 24 inches. Flange mount with standard SAE 5-hole pattern, or rubber grommet press fit. Probes may be shortened up to 1/2 of their measurable length. 0, 3, or 5 inch bendable section. 2 or 5 set points.

Ordering: (LL-BB-SS-MM)

LL - Length (12, 18, or 24 inches)

BB - Bendable Section (NB= non-bendable, 3B= 3inch, 5B= 5inch)

SS - Set points (2S= Empty/Full or 5S= Empty, 1/4, 1/2, 3/4, Full)

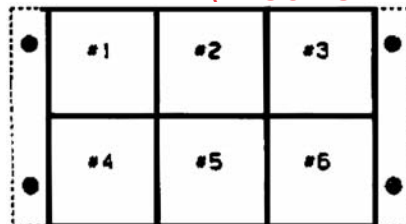
MM - Mounting method (PF= Press fit, FM= Flange Mount)

Example: A 12", non-bendable, 2 set point probe using a press fit mounting part number would be 12-NB-2S-PF

Description	Part No.	Price
2 set point	10-00257	.
5 set point	10-00258	.
Standard SAE 5-hole flange mounting kit	10-00259	.
Advanced model (separate electronics, 1/8 NPT fitting)	10-00256	.
<b>Accessories</b>		<b>Part No.</b>
Wire For Capacitance Fuel Probe	11-03996	.

IN

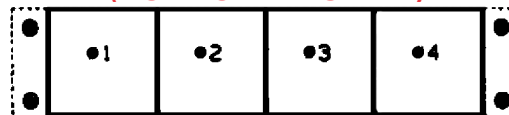
## MITCHELL INSTRUMENT CLUSTERS (BLOCK STYLE)



Available in 6 gauge (pictured) or 8 gauge clusters. On 8 gauge clusters, 2 additional gauges are added to the right side of the one pictured. Specify gauge and position desired for all cluster gauge positions. Prices are for the backplane (panel) only. Add price of

- each gauge for total cluster price.  
 6 gauge cluster (backplane only) ..... P/N 10-01708 .....  
 8 gauge cluster (backplane only) ..... P/N 10-01709 .....

## MITCHELL INSTRUMENT CLUSTERS (HORIZONTAL STYLE)



Available in 4 gauge (pictured), 5 gauge, or 6 gauge clusters. On 5 gauge and 6 gauge clusters, additional gauges are added to right side of the one pictured. Specify gauge and position desired for all cluster gauge positions. Prices are for the backplane (panel) only. Add price of each gauge for total cluster price.

- 4 gauge cluster (backplane only) ..... P/N 10-01710 .....  
 5 gauge cluster (backplane only) ..... P/N 10-01711 .....  
 6 gauge cluster (backplane only) ..... P/N 10-01712 .....

## MITCHELL MODULAR GAUGE FRAMES

Modular gauge frames should be specified by part number plus identification of what function gauge (eg Oil Press., Ammeter, EGT) gets plugged in each location. Operating voltage of either 12 or 24 must also be specified. If operating voltage is not specified, 12 volt wiring will be provided. All mounting frames include backplane connectors pre-wired with labeled 18 inch leads



Total Gauge Capacity	Configuration	Part No.	Price
2 Gauges	2 Wide 1 High	F9	.
6 Gauges	1 Wide 6 High	10-02738	.
1 Gauge	1 Gauge	10-02964	.